

LINES AND LEADERS

CFFA

MARCH 1982

Vol. 9

No. 3

Connecticut Fly Fishermen's Association

Meeting Notice

PROGRAM: Annual Fly-Tying Seminar and Willimantic River Creel Census Report.

WHERE: Veteran's Memorial Clubhouse, Sunset Ridge Drive, East Hartford.

WHEN: Wednesday, March 10, 1982

TIME: 7:30 PM

This program was originally scheduled for January and snowed out. We'll try again this month and hope for better weather. A panel of fly-tyers will provide informal demonstrations of tying techniques and patterns for a variety of fishing, Trout, Bass and possibly Salt-Water. There will also be a display of fly-tying materials and information will be provided on material selection. This has consistently been one of our most popular meetings, and is a good way to get started for the coming fishing season.

We will also hear from State Department of Environmental Protection Fishery Biologist Chuck Phillips about the results of the creel census conducted on the Willi last year. Many CFFA members were surveyed on the river, and we are all interested in learning what the Willi will be like this year.

The 1982 CFFA Fly Fishing School will begin on March 12 and continue for three weeks. These meetings will be followed by a casting session and an on-stream fishing session with an instructor. See page 9 for details.

Don't forget the statewide Trout Unlimited Banquet which will be held in Hamden on Saturday, March 13. The cost of the Banquet is \$15. A special banquet-membership offer is available for \$25. Call 263-3597 for reservations.

'An active member club of the Federation of Fly Fishermen'



THE CORNER POOL

Ed Fidrych

Larry Johnson

Those who attended the CFFA Banquet enjoyed a well run evening and an excellent combined program by Lee and Joan Wulff. As promised, we announced two winners in our Photo Contest. Mark Philippe won in 35mm with a slide shot of Henrys Fork in Idaho, and Dan Record won in color print with a shot of an Orvis Wes Jordan bamboo rod, reel and case. Their prizes were award certificates and gift certificates for \$15 from one of the sports shops and dealers advertising in our newsletter.

The contest did not draw the interest we had hoped for, but we'll give it at least one more try, although we may change the format. We are open to any comments or suggestions about what might increase member photography of CFFA fishing activities.

This issue we have a fun article on a new type of fishing by CFFA member Gary Stebbins. If this catches on, there are going to be some major changes in our fly tying and fly fishing schools. We also have the first installment of our out-of-state fishing list.

In the February issue of "Outdoor Message" DuPont announced a fishing knot contest. Details posted on the bulletin board.

A BRIEF MESSAGE FROM YOUR PRESIDENT:

Our annual banquet is perhaps the biggest event of the year. This event could not take place if it were not for the help and support that each and every member contributes. Each one of you, in your own way, has helped to make this event such a success. It is with deep appreciation that I thank each of you for your contributions to the banquet and to your club this past year.

* PRESIDENT: Elmer Latham EDITORS: Larry Johnson, Ed Fidrych *
* "Lines and Leaders" is the official publication of the Connecticut *
* Fly Fisherman's Association, Inc., and is distributed to its member- *
* ship and allies of conservation. Business card ads may be placed at *
* a cost of \$5 per month or \$40 for 9 months. Address newsletter *
* correspondence to either Larry Johnson, 60 Willard St., Hartford, CT *
* 06105 or to Ed Fidrych, Box 145, Glastonbury Rd., Portland, CT 06480. *
* Notice of address change and other correspondence should be sent to *
* CFFA, P.O. Box 18365, East Hartford, CT 06118. *
* The Connecticut Fly Fisherman's Association is "Organized to Preserve *
* and Promote the Pleasures and Tradition of Fly Fishing and to Conserve *
* Game-Fish Waters." CFFA regular membership meetings are held on the *
* second Wednesday of each month, September through May. Meetings are *
* held at the Veterans Memorial, Sunset Ridge Dr., East Hartford, CT. *
* Eastern Council meetings are held on the fourth Wednesday of each *
* month at the Mansfield Middle School, Spring Hill Rd., Mansfield, CT. *
* *****

OUT-OF-STATE FISHING CONTACTS

In response to members' requests we are establishing a listing of CFFA members who are familiar with out-of-state fishing areas and/or specialized fishing such as salt water or bass fishing. The following persons have indicated a willingness to be contacted. Any members interested in being listed should contact either Larry Johnson or Ed Fidrych.

New Brunswick, Vermont, New York, New Hampshire

Walter Cihocki, Jr. 177 Hubbard St., Middlefield, CT
06455 (346-4903)

Mass. (Deerfield River), Manchester, Vermont (Stillwater)

Dan Record, 9 Sequoia Dr., Cromwell, CT 06416 (635-1751)

Maine (Grace Pond Camps, Pond and stream)

Mark LaRosa, 82 Layton St., Hartford, CT 06110 (233-3338)

Wyoming (Deer Creek)

John Blake, Bushnell Plaza, Apt. 12B, Hartford, CT 06103
(525-8434)

Southwest Montana, Yellowstone Area, Nova Scotia, Some Catskill,
New York Areas

Jon F. Ridolfo, 5 Grace St., Windsor, CT 06095 (688-2959)

Steven Becker, 715 Wethersfield Ave., Hartford, CT 06114
(524-1024)

Maine (Landlocked and Atlantic Salmon), Vermont (Trout)

Ed Roberts, 21C Seymour Rd., East Granby, CT 06026
(651-8402)

New York (Beaverkill, East Branch Croton River), Pennsylvania
(Falling Spring Run, Yellow Breeches)

Myron Schulman, 7 Grande Ave., Windsor, CT 06095
(688-1034)

A & B SPORT SHOP

FISHING

FRESH AND SALT WATER



HUNTING

MUZZLE LOADING

(203) 872-8052

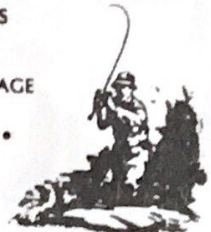
1000 HARTFORD TPKE. RT. 30. VERNON, CONN. 06066

**AUTUMN & GREENLEAF
OUTFITTERS**

ORVIS • CORTLAND 444 •
H. L. LEONARD AGENT • VINTAGE
CANE RODS & FIREARMS •
KNIFE & CUTLERY SPECIALISTS •
ESTATE BROKERAGE

R. S. DIMESKY

6 WILCOX ST. SIMSBURY, CT 06070 (203) 658-1786
AUTHORIZED SAGE DEALER



UNTANGLING ANGLING

On the Dues Renewal Form, there were a few comments made. I would like to share these comments with our members:

1. We need more programs on ecology
2. Lets not lose the Willi
3. We need a once-a-year fly casting clinic

Comments such as these will help us to plan for future programs. At our annual outing on the Willi, we have in the past tried to feature fly casting, rod building and entomology. Hopefully, this year we will have more related programs.

Dates of Interest

On February 25, 1982, the World's Fishing and Outdoor Exposition in Suffern, New York will take place.

On March 10, 1982, the Eastern Fishing and Outdoor Exposition will take place in Boxborough, Mass.

Although I have not attended the show in Suffern, I did have the opportunity to see the Boxborough show last year. This show is well worth your time and money. Once inside, you will have plenty of things to see. There are shows by well-known celebrities, demonstrations on fly-tying, casting clinics, tackle displays, boats, motors - you name it. Getting there is easy. Take I-86 to the Mass. Pike. Take Exit 10 Auburn, Mass. onto 290, to 495 North to Boxborough. Watch for signs to the show. In fact, you will be able to see the Sheraton Inn (where the show is) from I-495. Hope to see you there!

By Burlar

WINTER PASTIME

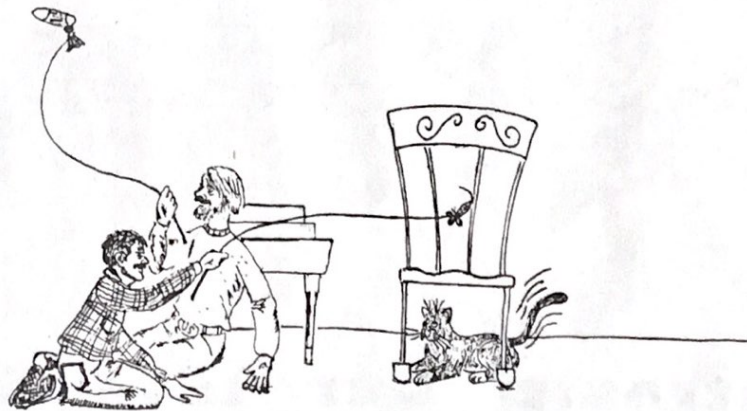
Winter is here. The streams, ponds and lakes are frozen over. Avid fly fishers spend the time tying creations for the spring thaw. Even the truly dedicated tyer reaches the point where with bleary eyes and aching back he throws his arms up in despair and stalks away from the tying bench to search for a winter diversion. A pastime must be found to satisfy the fishing urge.

Most are turning to ice fishing but find it lacks the finesse of a well casted line. Rumors of the self heated ice breaking fly line appear to be a technical dead end. Fishing in your son's aquarium, with fine leaders and microscopic midges, for Junior's prize Golden Platy only brings agonizing cries from your offspring. Slumping in your recliner after a tiring session, you dream of tight lines during an eternal season of M*A*S*H* reruns. Despair fills your heart. Will spring ever come?

But wait!! There is hope in many homes! There exists a creature which has habits similar to the trout. A creature that is cunning and selective. A creature that will run with the line or roll with the best trout. A creature whose habitat duplicates tight casting areas. I speak of the denizen of the den; Felis catus, the household cat. Yes, you're right, cat fishing-not to be confused with fishing for catfish. One of these land trout can provide hours of diversion to survive the winter.

Equipment

In this type of fishing everyone gets to be a Lee Wulff, casting without a rod. You can even go one further and cast without a reel! Your basic piece of equipment will be your line. Since water is not involved floating or sinking makes no difference. Be sure not to use your brand new Cortland. Use a retired line. You may fantasize yourself as Izaak Walton using rustic twine or laces. This line should be about 1/8" wide and at least 72" long. Any connections should be made with the nail knot. Tapered leaders are not necessary. As a matter of fact, no leaders are necessary. The end of the line is directly attached to the fly (two types to be discussed shortly).



17R

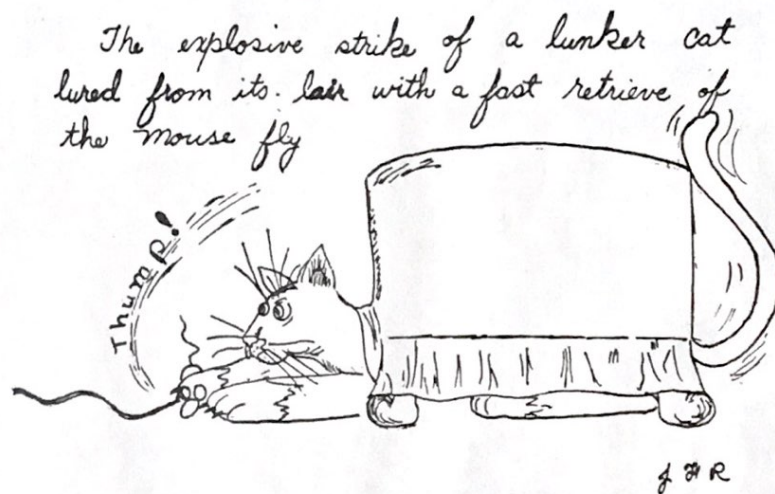
Casting

The basic casting position is with the right hand holding the line about 24" from the fly. The left hand holds the open end. The right forearm and hand provide the back and forth momentum. When the appropriate amount of line has been fed out, release your right hand and the fly will settle on target. Your left hand can follow the line to provide the extra reach. Releasing your left hand will usually cause the fly and line to sail beyond your casting point hitting bystanders. Also, watch your back cast. A back cast that destroys the family Ming vase will put you and your prey out in the cold.

The roll cast takes a bit of practice but is very handy for getting the fly up off the floor when your bottom is hopelessly stuck in your favorite chair.

Trolling, as usual, is done on the move. When trolling, your line follows behind and to the side. The open line end should be held firmly in hand or secured in your belt. Trolling to the toilet or the fridge will result in many strikes from the cat living in your home.

Flaying is another effective technique that is successful with cats but is not recommended for the streams. If a lunker fails to show interest in the fly, the fly should be repeatedly casted to the head until a strike is received. Flaying can be quite exhausting and may also cause your quarry to attack.



Patronize Our Advertisers

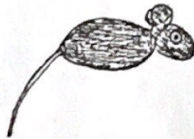
Flies

To date two standard flies are in use. The mouse which is fished like a streamer and the bird fished like a dry.

To tie a mouse start with a sock. Stuff the toe of the sock with another sock or cloth forming an oval shape about 3" maximum. Tie the oval off; the remaining sock forms a tail. Premade mice are available and can be immediately attached to the line at the nose. (see illustration) Cast the mouse out, putting a slight twitch in the line and retrieve. You may not get a strike until the mouse just passes out of the cat's vision-but be ready.

The bird fly is tied with pheasant or grouse tail feathers. Two feathers are tied together in a V configuration. Two other feathers are tied at the V's point, forming the body. (see illustration) A lunker cat will always make short work of a bird. A twitch in the line gives good results. When your trophy is holding in a difficult position, you can perch on the arm of a chair capping the bird. Just like poking a rod through the brush to fish a pool.


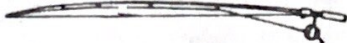
Favorite Patterns



JGR

307 E. CENTER STREET
MANCHESTER, CONN. 06040

RAY GORSKY
203-643-7177



RAY'S TACKLE SHOP

FRESH & SALT WATER TACKLE
FLY TYING MATERIALS
CUSTOM TIED FLYS — BAIT
ROD BUILDING SUPPLIES
CUSTOM CRAFTED RODS
-Fly Tyers Wanted-

NYMPHS
And Other Things

623-9525

Fishing Tackle
Custom Built Fishing Rods
Rod & Reel Repairs
Rod Building & Fly Tying Supplies

PAUL & JEANNE GIAUQUE
182 (Rear) MAIN STREET
BOX 453 — WAREHOUSE POINT, CONN. 06088
10% CFFA DISCOUNT ON FLY-TYING MATERIALS

Please note the absence of hooks on these patterns. A truly catch and release sport.

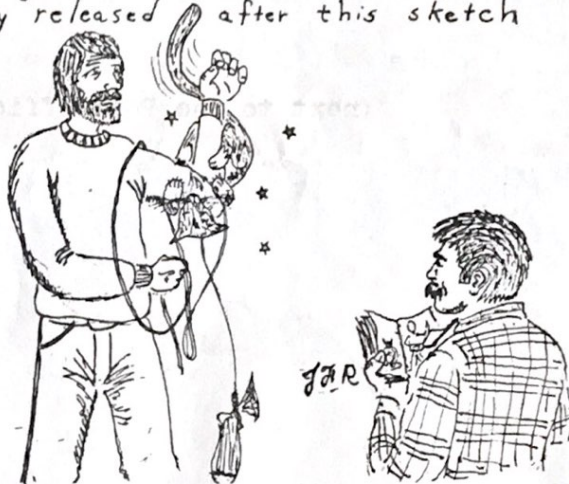
A final word of caution. Once a cat hooks your fly care must be taken when landing it. Do not try to tail a cat or you may get ten of its hooks in your forearm. There is nothing more embarrassing than displaying your trophy while it feeds on your arm.

Following these basics you will hopefully have an exhilarating indoor fishing season.

Written by: G.S.S.

Illustrated by: J.F.R.

This Beauty hit a "dapped" sock fly, it was quickly released after this sketch



Telephone 583-9714



S & M
FLY TYING MATERIALS
Cortland Certified Pro Shop
Authorized Orvis Dealer
STORE HOURS: 7 PM to 10 PM SAT. 10 AM to 5 PM
or By Appointment
WALT SPICKMAN 95 UNION ST.
BRISTOL, CONNECTICUT 06010

E.F. ROBERTS
CUSTOM RODMAKER



Split Cane Fly Rods in the Tradition of the Old Masters
Contemporary Graphite and Glass Rods.
Restoration and Repair Service
21C Seymour Rd., E. Granby, CT 06026 • (203) 651-8402

CONNECTICUT FLY FISHERMEN'S ASSOCIATION

presents

"1982 FLY FISHING SCHOOL"

A course for beginners and neophytes...

<u>CLASSES:</u>	<u>No.</u>	<u>DATE</u>	<u>SUBJECT</u>
	1	3-12-82	Rods, Reels, Lines, Leaders, and Knots
	2	3-19-82	Flies and Fish
	3	3-26-82	Water Types and How to Fish Them
	4	4-3-82	Casting Instruction and Fishing (pond)
	5	May	Fishing a Stream - (3-5 students per instructor on a stream of your choice)

LOCATION: (Class 1, 2, 3)..7:00 P.M. in the East Hartford Public Library (lounge), 840 Main Street, East Hartford, CT (next to the Post Office)

(Class 4).....A private pond stocked with trout

(Class 5).....During this final session, students select a stream in their area and practice course techniques (approach, wading, stream reading, etc.) with a CFFA instructor. NOTE: Students must contact instructor by 4-30-82 to make arrangements, supply their own equipment, and have a valid Connecticut fishing license.

EQUIPMENT: For Class 4 only, CFFA will furnish equipment for students that do not own their own. We recommend that students do not purchase their own equipment until after Class 1. It is also suggested that students bring appropriate materials to take notes.

CLASS SIZE: Limited to 60 students. (Average class size is 40 students.)

TUITION: CFFA Member.....\$ 20.00 Non-Member.....\$ 25.00

CFFA FFS ENROLLMENT APPLICATION

Date: _____

Please print required information. Forward application form and tuition (checks payable to C.F.F.A.) to: Dan Record, Education Chairman, 9 Sequoia Drive, Cromwell, Connecticut 06416. (If a receipt or enrollment confirmation is desired, please enclose a self-addressed stamped envelope.)

NAME _____ PHONE _____
STREET _____ CITY _____ STATE _____
ZIP _____ CFFA MEMBER _____ NON-MEMBER _____

For additional information contact Gary Bogli, 82 Elizabeth Drive, Manchester, Connecticut 06040 Phone: 649-4227

MARCH 1982 CALENDAR

- March 3 Board of Directors Meeting
- 10 March CFFA Meeting
- 12 Fly Fishing School-First Class
- 19 Fly Fishing School-Second Class
- 26 Fly Fishing School-Third Class

COMING EVENTS

- April 3 Fly Fishing School-Casting Instruction
- 7 Board of Directors Meeting
- 14 April CFFA Meeting
- 17 Fishing Season Starts
- May Annual CFFA Outing
- Fly Fishing School-On Stream Instruction

March						
SUN	MON	TUE	WED	THU	FRI	SAT
	1	2	3	4	5	6
7	8	9	10	11	12	13
14	15	16	17	18	19	20
21	22	23	24	25	26	27
28	29	30	31			

April						
SUN	MON	TUE	WED	THU	FRI	SAT
			1	2	3	
4	5	6	7	8	9	10
11	12	13	14	15	16	17
18	19	20	21	22	23	24
25	26	27	28	29	30	